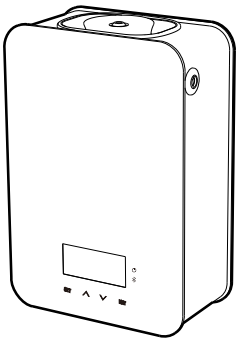


PRODUCT MANUAL

Aroma diffuser

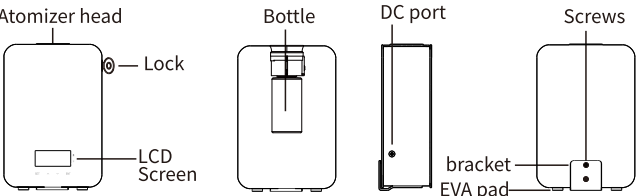
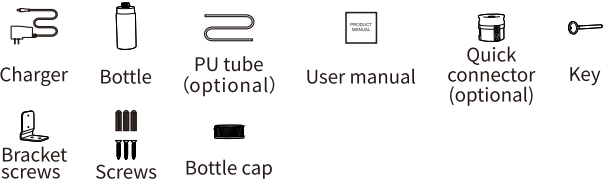
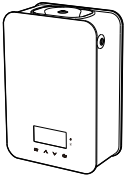


If the QR code cannot be scanned, please search for "Scent Marketing" in Google playor APP store.

- BT
- LCD
- V2.0

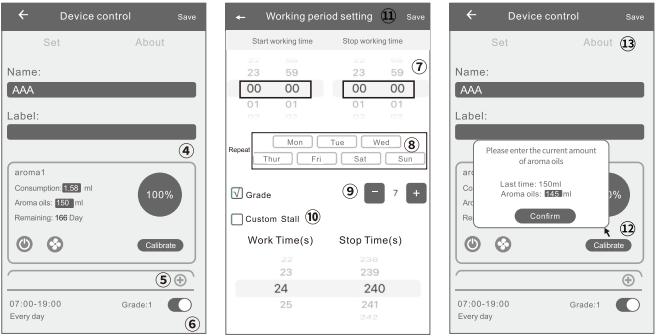
01 Specification

- Model A311
- Size 260\*175\*89mm
- Bottle 180ml
- Input DC12V 1A MAX
- Power 6W
- Coverage 130m³/400m³/14100ft³
- N.W. 1.88 kg
- Material plastic, aluminum, glass

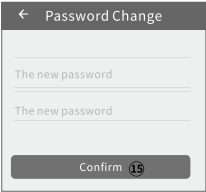


02 Bluetooth instruction

- Where to get the app:**  
Please search for “Scent Marketing” in Google play or APP store.
- Note:**  
Make sure that the location function of Bluetooth and mobile phone is enabled.
- Open the scent marketing app and select Bluetooth.
  - Select your device.
  - Enter the default password 8888 and press Login.



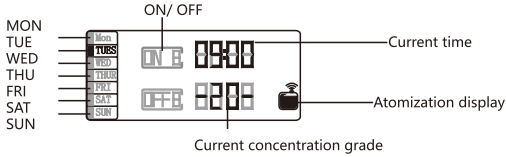
- On the Device Control page; You can change your device name and label information of your scent diffuser. **NOTE:** Press the "Save" button at the top right corner of the screen after each change.
- Different schedules by pressing the " + " button. To delete a schedule, swipe left.
- Press the toggle button to turn on/off any schedule.
- On the "Working period setting" page, Set the hours of the day you want your diffuser to run by scrolling the "Start working time" and "Stop working time".
- Select the days of the week you want your diffuser to run (all days are pre-selected).
- Press " + " or " - " to increase or decrease the preset intensity grades (1-20. See chart for details).
- Check (✓) the Custom box to create a custom intensity and scroll the "Spray Time" and "Pause Time".
- Press the "Save" button to update the Settings.



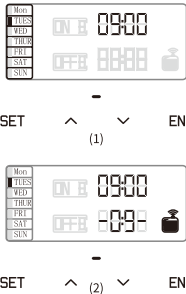
- Enter a new four-digit password, then click "Confirm".

If you forget the password, please press the reset button to restore the factory setting. The factory settings password is 8888.

03 LCD time setting



- Turn on the power**  
Connect the power and turn on the switch with a sound “Beep” coming out, Then the screen shows the initial time and the current grade.
- Turn off the power**  
The screen will be off when turn off the switch and disconnect the power.
- Fan control**  
Long press and hold ▲ for 3 seconds to turn on the fan, then long press and hold ▼ for 3 seconds to turn off the fan.
- Screen lock or unlock**  
Screen lock: If there is no any operation in 60s, the screen will be locked automatically.  
Unlock: Tap the SET button and hold for 3 seconds, the screen will be unlock, and screen is lit up.
- Current time setting**  
1. Tap SET button and hold for 3 seconds until the “beep” sound coming out, you can start to set the working periods.  
2. Tap ▲ or ▼ to select the current working day, then tap ENT to start to set the current time, Tap ▲ or ▼ to adjust the current time, then tap SET to save the setting. (show as picture 1)
- Concentration Grade setting**  
There are 9 grades available. Tap ▲ button to increase the scent concentration. Tap ▼, to decrease the scent concentration. (Shown as picture 2)

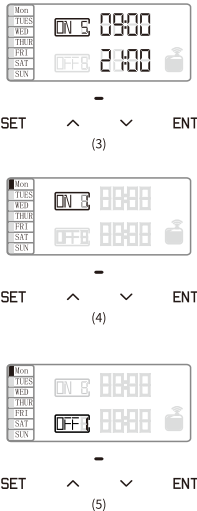


Working periods setting

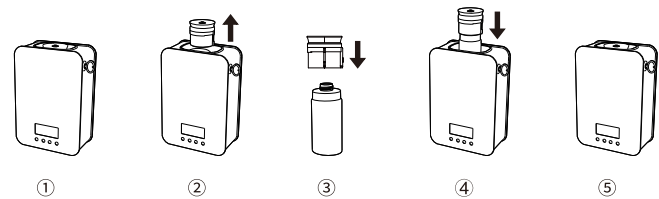
- There are total 5 working periods available (show as picture 3).
  - Tap SET to start setting the first working period, and the working time will be flashing on the screen.
  - Tap ▲ or ▼ to adjust the working time, then confirm by tapping ENT.
  - Tap ENT can turn to the next setting (order: the switch of the current working periods → start/stop working time → grades → working day → the next working period), then you can tap ▲ or ▼ to adjust the current setting.. (show as picture 5).
- The start working time can not be same with the stop working time, otherwise this working periods will not be displayed on APP.

Day	00:00 - 00:00	00:00 - 00:00	00:00 - 00:00	00:00 - 00:00	00:00 - 00:00
Mon	ON/OFF	ON/OFF	ON/OFF	ON/OFF	ON/OFF
Thues	ON/OFF	ON/OFF	ON/OFF	ON/OFF	ON/OFF
Wed	ON/OFF	ON/OFF	ON/OFF	ON/OFF	ON/OFF
Thur	ON/OFF	ON/OFF	ON/OFF	ON/OFF	ON/OFF
Fri	ON/OFF	ON/OFF	ON/OFF	ON/OFF	ON/OFF
Sat	ON/OFF	ON/OFF	ON/OFF	ON/OFF	ON/OFF
Sun	ON/OFF	ON/OFF	ON/OFF	ON/OFF	ON/OFF

(PS: The first working period is factory defaults with start working time 07:00 and stop working time 19:00, others are all with 00:00.)



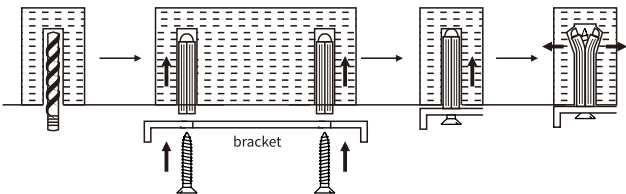
04 How to refill essential oils



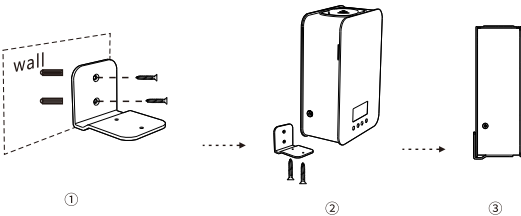
- 1. Open the machine with key, and don't remove the key;
- 2. Pull out the atomizer head;
- 3. Take out the bottle, and fill with essential oil, then tightly close the head;
- 4. Place the bottle back into the machine, after aligning with the position, press downward the atomizer head;
- 5. Adjust the working periods, the lock the machine with key.

05 How to install the machine on wall

How to install the expansion anchors?



Drill into the wall, insert the expansion anchors into the hole, then place the screw into the expansion anchors and tighten it.



- 1. Position the bracket holes, then drill holes on the wall, the insert the wallanchors into the wall holes.
- 2. Secure the bracket with screws on the wall, and align with the holes of the machine on the bottom, then secure the machine with screws from the bottom.

06 Concentration and Consumption

Grade	Work time(s)	Stop time(s)	Consumption(g/h)
G1	15s	300s	0.05
G2	15s	150s	0.10
G3	20s	120s	0.15
G4	20s	85s	0.20
G5	25s	80s	0.25
G6	30s	75s	0.30
G7	30s	60s	0.35
G8	30s	50s	0.40
G9	30s	40s	0.45
G10	30s	33s	0.50
G11	33s	30s	0.55
G12	40s	30s	0.60
G13	50s	30s	0.66
G14	60s	30s	0.71
G15	75s	30s	0.76
G16	80s	25s	0.81
G17	85s	20s	0.86
G18	120s	20s	0.90
G19	150s	15s	0.96
G20	300s	15s	1.01
Customized	5-300s	5-300s	--

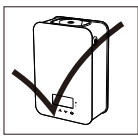
- Note:** 1. The above data is for reference only. Actual oil consumption may vary if customers use essential oils with different viscosities;
2. For the best diffusion effect, it's recommended to use essential oils with a viscosity below 30mPa.s. And the optimal working temperature is 25°C.

07 ⚠ Warning

- 1. Please always keep the machine upright, tilting or placing it flat will cause oil leakage, which will lead to machine damage.
- 2. Shall not modify, disassemble or repair the machine arbitrarily. Any failure happens, please contact our relevant technicians in time.
- 3. The machine will not work when it is not in the working periods, even the atomization icon is displayed on the screen.
- 4. When the screen is in lock status, the button cannot be operated and there is no display on the screen.
- 5. If the display is garbled, breakdown or other problems, please restart the machine.

Restore factory setting

(Step: Tap the ENT button and hold about 3 seconds until the "beep" sound coming out.)



08 Troubleshooting

Before asking to have the machine repaired, please try to diagnose the problem first following the below instructions.

Breakdown	Solution
No diffuse	- Check if the power is ON or OFF; - The pump is damaged and needs replacing; - If there is no diffusion or it is weak, replace the oil with rubbing alcohol and run it through the machine for 5 minutes.
Little or no spray coming out	- Atomization head is blocked. Clean diffuser by running rubbing alcohol through it. Or replace diffuser core; - Diffuser core with straw is missing or damaged. Replace with a new one; - Pump is damaged and may need replacing.
Diffuser spraying liquid	- Diffuser core is damaged, Replace diffuser core. - Machine is tilted or angled, Make sure it's upright at all times.
Oil leaking	- Bottle is loose. Screw it in properly and straight; - Seal is broken or missing. Replace the supplied seal that came with the machine.
Abnormal sound	- Pump is loose or damaged, Tighten the pump or replace.
No display on screen	- Make sure the power is ON; - Check the plug for damage, Try another outlet, If plug is damaged replace; - Display screen is damaged, Replace.

09 Equipment cleaning

**The machine needs to be cleaned when below situations happen:**

- 1. You're about to change to another essential oil;
- 2. The atomization volume becomes weak.

Cleaning steps:

- 1. Find a clean bottle and fill it with industrial alcohol;
- 2. Install this bottle to the machine and turn the machine on. Let it work for 5-10 minutes;
- 3. Turn off the electric, finish the cleaning.