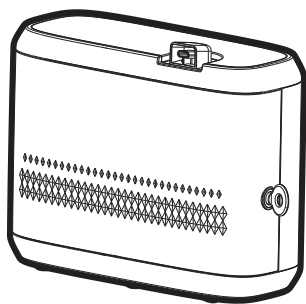


PRODUCT MANUAL
Aroma diffuser



Scent marketing



Android system



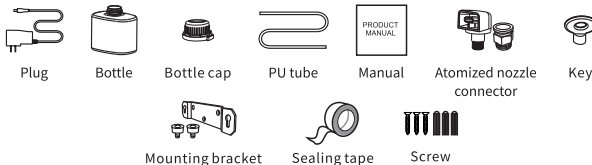
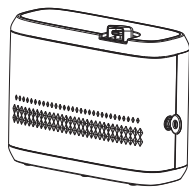
IOS system

If the QR code cannot be scanned, please search for "ScentMarketing" in Google play or APP store.



01 Specification

Model	A305S/A305M/A305L
Size	295*222*112mm
Bottle	850ml
Input	12V = 1A/1A/2A
Power	6W/6W/9W
Coverage	130m³/390m³/14100ft³ 390m³/1150m³/40600ft³ 830m³/2500m³/88000ft³
N.W.	1.84kg/1.9kg/2.13kg
Material	Plastic



Usage of sealing tape:

- Before replacing atomizing core, wrap sealing tape around atomized core thread about 3-5 turns to avoid air leakage;
- Before connecting atomized connector, wrap sealing tape around atomized connector thread about 3-5 turns to avoid air leakage.

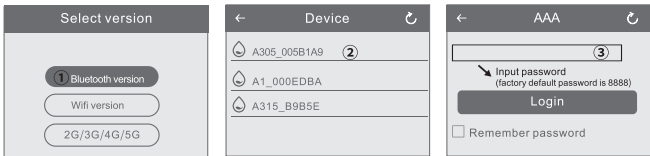
02 Bluetooth time setting

Where to get the app:

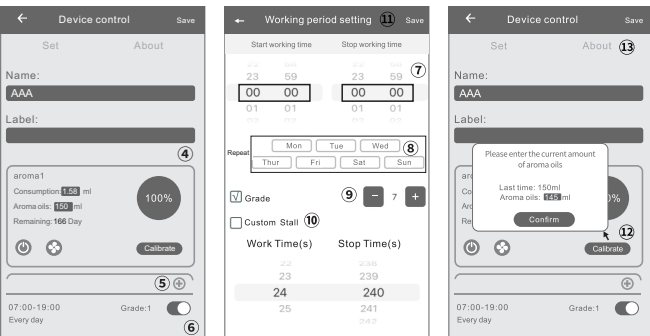
Please search for "Scent Marketing" in Google play or APP store.

Note:

Make sure that the location function of Bluetooth and mobile phone is enabled.



- Open the scent marketing app and select Bluetooth.
- Select your device.
- Enter the default password 8888 and press Login.

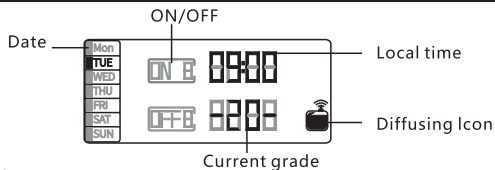


- On the Device Control page; You can change your device name and label information of your scent diffuser.
NOTE: Press the "Save" button at the top right corner of the screen after each change.
- Different schedules by pressing the "+" button. To delete a schedule, swipe left.
- Press the toggle button to turn on/off any schedule.
- On the "Working period setting" page, Set the hours of the day you want your diffuser to run by scrolling the "Start working time" and "Stop working time".
- Select the days of the week you want your diffuser to run (all days are pre-selected).
- Press "+" or "-" to increase or decrease the preset intensity grades (1-20. See chart for details).
- Check (✓) the Custom box to create a custom intensity and scroll the "Spray Time" and "Pause Time".
- Press the "Save" button to update the Settings.
- Enter a new four-digit password, then click "Confirm".

NOTE:

For password change or password recovery, press and hold the ENT button on the device for 3-5 seconds to reset the password to 8888.

03 LCD time setting



Power on/off

Connect to the power supply and power it on, you will hear a beep. The initial time and current grade will then display on the screen, which will be off when disconnecting the power.

Fan on/off

To turn the fan on, press and hold the ▲ button for 3 seconds; to turn it off, press and hold the ▼ button for 3 seconds.

Auto-lock and un-lock

The buttons will deactivate automatically when there is no operation after 60 seconds. To unlock them, press and hold the SET button for 3 seconds until you hear a beep and the screen illuminates.

Local time setting

Press and hold the SET button for 3 seconds until you hear a beep, then use the ▲ or ▼ buttons to select the working day. Next, press the ENT button to set the local time, then use the ▲ or ▼ buttons to select the hour of the working day. (see Figure 1).

Concentration grade setting

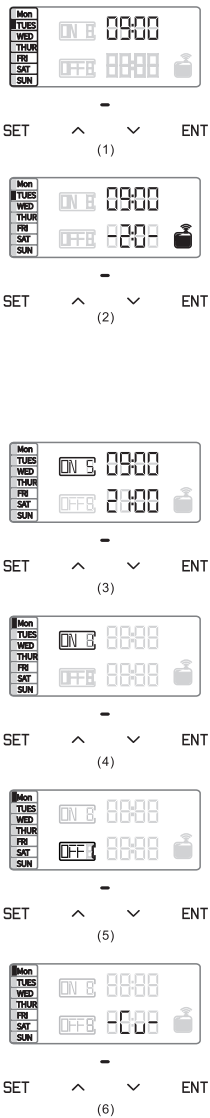
There are 20 grades available. Touch▲to increase grade, touch ▼to decrease grade(Figure 2).

Working Schedules Setting

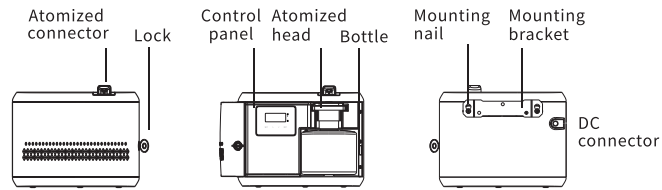
- You can set up 5 different schedules every day. (Figure 3).
 - Tap SET button to start setting a working schedule (ON1). Use the ▲ or ▼ buttons to select the specific working schedule (ON1-ON5). Then press the ENT button to turn the switch on/off, use ▲ to turn on and ▼ to turn off, tap ENT button again to move to the working time, and use the ▲ or ▼ buttons to select the number.
 - Press ENT again to set the intensity grade. Use ▲ to increase the grade and ▼ to decrease the grade. Press ENT again to select the working day (MON-SUN). Use the ▲turn on this working day(ON1, see figure 4), and ▼to turn it off. (OFF1, see figure 5).
 - Then press ENT again to set the next working day.
 - When finish all working periods, press and hold ENT to confirm and exit.
- If you have any questions about the above steps, please refer to the instruction video for button operation.
- Note:** The "-Cu" displayed on the screen indicates a customized mode only set via the APP (refer to Figure 6). The machine will not diffuse if the start and stop working time are same.

Working time period	00:00	00:00	00:00	00:00	00:00
Mon	ON/OFF	ON/OFF	ON/OFF	ON/OFF	ON/OFF
Tues	ON/OFF	ON/OFF	ON/OFF	ON/OFF	ON/OFF
Wed	ON/OFF	ON/OFF	ON/OFF	ON/OFF	ON/OFF
Thur	ON/OFF	ON/OFF	ON/OFF	ON/OFF	ON/OFF
Fri	ON/OFF	ON/OFF	ON/OFF	ON/OFF	ON/OFF
Sat	ON/OFF	ON/OFF	ON/OFF	ON/OFF	ON/OFF
Sun	ON/OFF	ON/OFF	ON/OFF	ON/OFF	ON/OFF

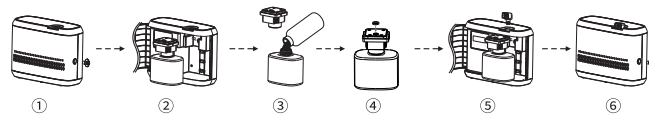
(PS: The first working period is factory defaults with start working time 07:00 and stop working time 19:00, the rest are all with 00:00.)



04 Overview



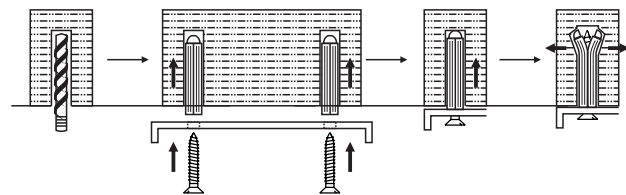
05 How to refill essential oils



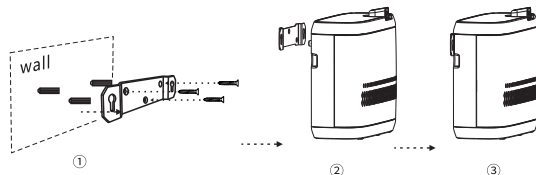
1. Unlock the machine with key ;
2. Take out the diffuser head and the bottle;
3. Twist off the bottle and fill it with essential oils;
4. Tighten the diffuser head securely after inserting the seal gasket into place;
5. Put it in the machine and screw the atomized connector;
6. Set the machine working schedules and lock the machine with key.

06 How to install the machine on wall

How to install the expansion anchors?



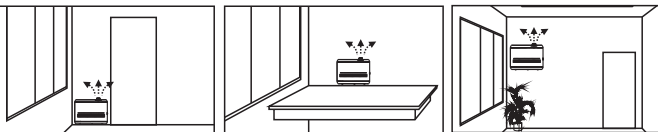
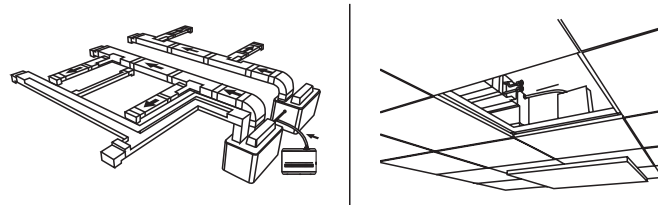
Drill into the wall, insert the expansion anchors into the hole, then place the screw into the expansion anchors and tighten it.



1. Align the mounting bracket with the specific position on the wall, then drill a hole into the wall and insert the expansion anchor;
2. Securely attach the mounting bracket to the wall using screws, and finally, hang the machine onto the mounting bracket.

07 Applications

Idea for Hotels, Conference rooms, Malls, Exhibition halls, Major retailers, Bars, SPAS, Business places or anywhere you want to a fragrance experience.



08 Concentration and consumption

Grade	work(s)		intervals(s)	Consumption(g/h)		
	A305S	A305M/A305L		A305S	A305M	A305L
G1	15s	15s	300s	0.10	0.1	0.2
G2	15s	15s	150s	0.14	0.2	0.3
G3	20s	20s	120s	0.18	0.3	0.5
G4	20s	20s	85s	0.22	0.4	0.6
G5	25s	25s	80s	0.26	0.5	0.8
G6	30s	30s	75s	0.30	0.6	0.9
G7	30s	30s	60s	0.34	0.7	1.0
G8	30s	30s	50s	0.38	0.8	1.2
G9	30s	30s	40s	0.45	0.9	1.3
G10	30s	30s	33s	0.50	1.0	1.5
G11	33s	33s	30s	0.55	1.1	1.8
G12	40s	40s	30s	0.60	1.2	2.0
G13	50s	50s	30s	0.65	1.3	2.3
G14	60s	60s	30s	0.70	1.4	2.5
G15	75s	75s	30s	0.75	1.5	2.8
G16	80s	80s	25s	0.80	1.6	3.0
G17	85s	85s	20s	0.85	1.7	3.3
G18	120s	120s	20s	0.90	1.8	3.5
G19	150s	150s	15s	0.95	1.9	3.8
G20	300s	300s	15s	1.00	2.0	4.0
Customized	3-300s	5-500s	5-500s	—	—	—

▲ Up grade ▼ Down grade

- Note:** 1. The above data is for reference only. Actual oil consumption may vary if customers use essential oils with different viscosities;
2. For the best diffusion effect, it's recommended to use essential oils with a viscosity below 30mPa.s. And the optimal working temperature is 25°C.

09 ⚠ Caution

Please follow the instructions below to avoid any damages.

- Do not modify, disassemble, or repair the machine arbitrarily. In case of any failure, please promptly contact a relevant technician
- Shall not damage the power cord forcibly, such as bend, yank, heavy load, clip or reprocess it.
- Avoid touching the wire or product shell during thunderstorms or lightning
- Ensure not to use a broken or unmatched plug with the socket.
- Keep the machine and plug dry; do not expose them to moisture.
- Avoid using overloaded power sockets, wires, or broken plugs.
- Shall not disassemble the machine while it is working.

Warning

1. Please ensure the machine remains vertical. Tilting or laying it flat may cause oil overflow, potentially affecting its efficiency.
2. The machine will stop diffusing if it's not within the schedule working periods, even if the diffusing icon remains on.
3. The buttons become inactive and the screen displays nothing when the machine is locked.
4. If the display becomes cluttered, freezes, or other issues, please restart the machine to reset it to default settings. (**Method:** Press and hold the ENT button for 5 seconds until you hear a beep.)



11 Troubleshooting

Before requesting machine repairs, please attempt to diagnose the problem using the following instructions.

Breakdown	Solution
Does not diffuse	-Ensure the selected mode is correct; -Check if the machine is within the scheduled working period; -Replace the air pump if it is damaged.
Weak mist	-Clean the atomizing core with alcohol or replace it with a new component; -Inspect the gasket for damage or looseness; -Ensure the tube is securely connected.
Oil leakage	-Tighten the bottle securely; -Inspect the atomized head gasket for damage or looseness.
Oil sprinkle	-Replace the damaged atomizing core with a new one; -Ensure the machine is kept vertical and not tilted or laid down.
Abnormal noise	-Retighten the air pump if it is loose; -Replace the air pump if it is damaged.

12 Equipment cleaning

The machine requires cleaning under the following circumstances:

1. Before changing to a different type of essential oil;
2. When the atomization volume decreases
3. It is recommended to clean the machine by diffusing isopropyl alcohol once a month.

Cleaning steps:

1. Remove the atomized head and loosen the bottle;
2. Prepare a container and fill it with industrial alcohol. Soak the diffuser head and the bottle in the alcohol for 5-10 minutes;
3. Allow the diffuser head and the bottle to air dry.